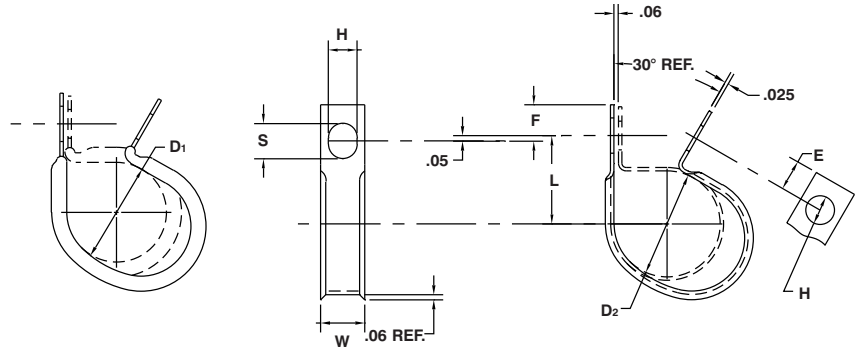


FLARED EDGE CLAMPS Closed Type – Furnished Open

MATERIAL: HD Galv Steel, Chem-Treated G90, Per ASTM A653/A653M

CUSHION: Black Vinyl, 1/32" Thick



D ₁		D ₂		L	H	W	E	F	S
Clamping Diameter	Part Number	Clamping Diameter	Part Number	Center To Center	Hole Diameter	Width	Hole Center To End	Slot Center To End	Slot Length
±.031		±.015		±.031	±.005	±.010	±.015	±.015	±.020
.187	CFV-0409	.250	CF-0409	.500	.281	.500	.250	.296	.375
.250	CFV-0509	.312	CF-0509	.531					
.312	CFV-0609	.375	CF-0609	.562					
.375	CFV-0709	.437	CF-0709	.593					
.437	CFV-0809	.500	CF-0809	.625					
.500	CFV-0909	.562	CF-0909	.656					
.562	CFV-1009	.625	CF-1009	.687					
.625	CFV-1109	.687	CF-1109	.718					
.687	CFV-1209	.750	CF-1209	.750					
.750	CFV-1309	.812	CF-1309	.781					
.812	CFV-1409	.875	CF-1409	.812					
.875	CFV-1509	.937	CF-1509	.843					
.937	CFV-1609	1.000	CF-1609	.875					
1.000	CFV-1709	1.062	CF-1709	.906					
.125	CFV-0311	.187	CF-0311	.500	.343	.562	.281	.328	.437
.187	CFV-0411	.250	CF-0411	.531					
.250	CFV-0511	.312	CF-0511	.562					
.312	CFV-0611	.375	CF-0611	.594					
.375	CFV-0711	.437	CF-0711	.625					
.437	CFV-0811	.500	CF-0811	.656					
.500	CFV-0911	.562	CF-0911	.688					
.562	CFV-1011	.625	CF-1011	.719					
.625	CFV-1111	.687	CF-1111	.750					
.687	CFV-1211	.750	CF-1211	.781					
.750	CFV-1311	.812	CF-1311	.812					
.812	CFV-1411	.875	CF-1411	.844					
.875	CFV-1511	.937	CF-1511	.875					
.937	CFV-1611	1.000	CF-1611	.906					
1.000	CFV-1711	1.062	CF-1711	.938					
.125	CFV-0313	.187	CF-0313	.562	.406	.625	.312	.359	.500
.187	CFV-0413	.250	CF-0413	.593					
.250	CFV-0513	.312	CF-0513	.625					
.312	CFV-0613	.375	CF-0613	.656					
.375	CFV-0713	.437	CF-0713	.687					
.437	CFV-0813	.500	CF-0813	.718					
.500	CFV-0913	.562	CF-0913	.750					
.562	CFV-1013	.625	CF-1013	.781					
.625	CFV-1113	.687	CF-1113	.812					
.687	CFV-1213	.750	CF-1213	.843					
.750	CFV-1313	.812	CF-1313	.875					
.812	CFV-1413	.875	CF-1413	.906					
.875	CFV-1513	.937	CF-1513	.937					
.937	CFV-1613	1.000	CF-1613	.968					
1.000	CFV-1713	1.062	CF-1713	1.000					

Except for clamping diameter, dimensions of cushioned and plain parts are identical.