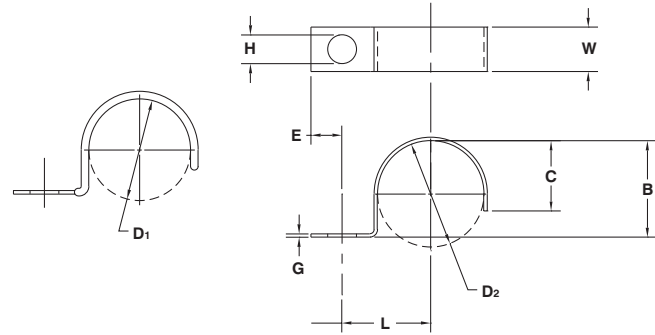


# HALF CLIPS

**MATERIAL:** HD Galv Steel, Chem-Treated G90, Per ASTM A653/A653M  
**CUSHION:** Black Vinyl, 1/32" Thick



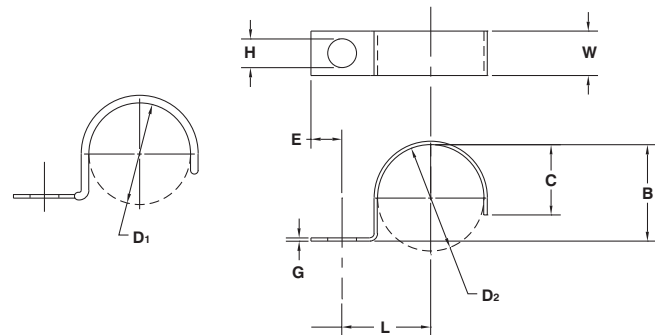
D <sub>1</sub>	Part Number	D <sub>2</sub>	Part Number	H	L	E	B	C	G	W
Clamping Diameter		Clamping Diameter		Hole Diameter	Center To Center	Hole Center To End	Base To Top Of Diameter	Closure	Gage	Width
±.031		±.015		±.005	±.031	±.015	±.015	±.015	See Pg. 40	±.010
		.125	CH-0204*	.125	.203	.093	.125	.125	.025	.375
			CH-0207	.218	.437	.250	.125	.093	.032	.500
			CH-0209	.281	.437	.250	.125	.093	.032	.500
		.187	CH-0307	.218	.437	.250	.156	.093	.032	.500
			CH-0309	.281	.437	.250	.156	.093	.032	.500
.187	CHV-0407	.250	CH-0407	.218	.437	.250	.188	.156	.032	.500
	CHV-0409		CH-0409	.281	.437	.250	.188	.156	.032	.500
.250	CHV-0507	.312	CH-0507	.218	.500	.250	.250	.188	.048	.500
	CHV-0509		CH-0509	.281	.500	.250	.250	.188	.048	.500
	CHV-0511		CH-0511	.343	.500	.250	.250	.188	.048	.625
.312	CHV-0607	.375	CH-0607	.218	.531	.312	.312	.218	.048	.625
	CHV-0609		CH-0609	.281	.531	.312	.312	.218	.048	.625
	CHV-0611		CH-0611	.343	.687	.343	.375	.218	.060	.625
	CHV-0613		CH-0613	.406	.687	.343	.375	.218	.060	.750
.375	CHV-0707	.437	CH-0707	.218	.562	.312	.375	.281	.048	.625
	CHV-0709		CH-0709	.281	.562	.312	.375	.281	.048	.625
	CHV-0711		CH-0711	.343	.687	.375	.375	.281	.060	.625
	CHV-0713		CH-0713	.406	.687	.375	.375	.281	.060	.750
.437	CHV-0807	.500	CH-0807	.218	.625	.312	.437	.312	.060	.625
	CHV-0809		CH-0809	.281	.625	.312	.437	.312	.060	.625
	CHV-0811		CH-0811	.343	.687	.375	.437	.312	.060	.625
	CHV-0813		CH-0813	.406	.687	.375	.437	.312	.060	.750
.500	CHV-0907	.562	CH-0907	.218	.687	.312	.500	.343	.060	.625
	CHV-0909		CH-0909	.281	.687	.312	.500	.343	.060	.625
	CHV-0911		CH-0911	.343	.750	.375	.500	.343	.060	.625
	CHV-0913		CH-0913	.406	.750	.375	.500	.343	.060	.750
.562	CHV-1007	.625	CH-1007	.218	.750	.312	.562	.437	.060	.625
	CHV-1009		CH-1009	.281	.750	.312	.562	.437	.060	.625
	CHV-1011		CH-1011	.343	.812	.375	.562	.437	.060	.625
	CHV-1013		CH-1013	.406	.812	.375	.562	.437	.060	.750

Except for clamping diameter, dimensions of cushioned and plain parts are identical.  
 Note: Part Numbers shown with asterisk (\*) are produced from CRCQ Steel, Zinc Plated.

# HALF CLIPS

**MATERIAL:** HD Galv Steel, Chem-Treated G90, Per ASTM A653/A653M

**CUSHION:** Black Vinyl, 1/32" Thick



D <sub>1</sub>	Part Number	D <sub>2</sub>	Part Number	H	L	E	B	C	G	W
Clamping Diameter		Clamping Diameter		Hole Diameter	Center To Center	Hole Center To End	Base To Top Of Diameter	Closure	Gage	Width
±.031		±.015		±.005	±.031	±.015	±.015	±.015	See Pg. 40	±.010
.625	CHV-1107	.687	CH-1107	.218	.812	.312	.625	.406	.060	.625
	CHV-1109		CH-1109	.281	.812	.312	.625	.406	.060	.625
	CHV-1111		CH-1111	.343	.875	.375	.625	.406	.060	.625
	CHV-1113		CH-1113	.406	.875	.375	.625	.406	.060	.750
.687	CHV-1207	.750	CH-1207	.218	.812	.312	.687	.437	.060	.625
	CHV-1209		CH-1209	.281	.812	.312	.687	.437	.060	.625
	CHV-1211		CH-1211	.343	.875	.375	.687	.437	.060	.625
	CHV-1213		CH-1213	.406	.875	.375	.687	.437	.060	.750
.750	CHV-1307	.812	CH-1307	.218	.875	.312	.750	.468	.060	.625
	CHV-1309		CH-1309	.281	.875	.312	.750	.468	.060	.625
	CHV-1311		CH-1311	.343	.937	.375	.750	.468	.060	.625
	CHV-1313		CH-1313	.406	.937	.375	.750	.468	.060	.750
.812	CHV-1409	.875	CH-1409	.281	.937	.375	.812	.531	.060	.750
	CHV-1411		CH-1411	.343	.937	.375	.812	.531	.060	.750
	CHV-1413		CH-1413	.406	.937	.375	.812	.531	.060	.750
.875	CHV-1509	.937	CH-1509	.281	.968	.437	.812	.593	.060	.750
	CHV-1511		CH-1511	.343	.968	.437	.812	.593	.060	.750
	CHV-1513		CH-1513	.406	.968	.437	.812	.593	.060	.750
.937	CHV-1609	1.000	CH-1609	.281	1.000	.437	.937	.625	.060	.750
	CHV-1611		CH-1611	.343	1.000	.437	.937	.625	.060	.750
	CHV-1613		CH-1613	.406	1.000	.437	.937	.625	.060	.750
1.000	CHV-1709	1.062	CH-1709	.281	1.062	.437	1.000	.687	.060	.750
	CHV-1711		CH-1711	.343	1.062	.437	1.000	.687	.060	.750
	CHV-1713		CH-1713	.406	1.062	.437	1.000	.687	.060	.750

Except for clamping diameter, dimensions of cushioned and plain parts are identical.  
 Note: Part Numbers shown with asterisk (\*) are produced from CRCQ Steel, Zinc Plated.