

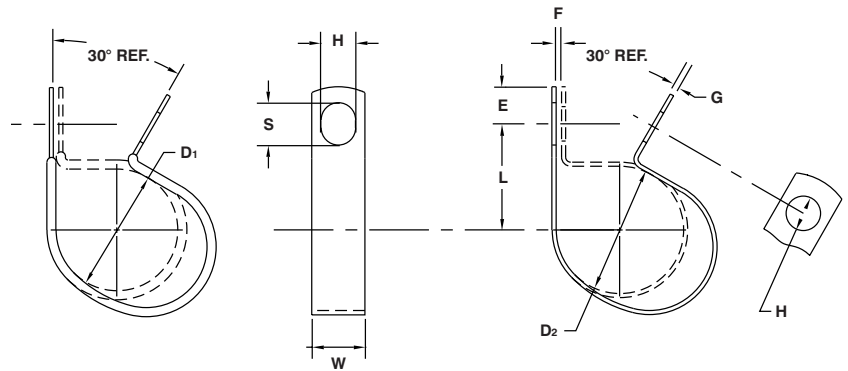
# WIRING AND TUBE CLAMPS Closed Type – Furnished Open

**MATERIAL:** HD Galv Steel, Chem-Treated G90, Per ASTM A653/A653M

**CUSHION:** Black Vinyl, 1/32" Thick

**CWV-CW:** Parts Have Two Round Holes

LIGHT DUTY CLAMPS



D <sub>1</sub>		D <sub>2</sub>		H	L	W	E	F	G
Clamping Diameter	Part Number	Clamping Diameter	Part Number	Hole Diameter	Center To Center	Width	Hole Center To End	Gap	Gage
±.031		±.015		±.005	±.031	±.010	±.015	±.031	See Pg. 40
		.125	CW-0205*	.172	.297	.375	.188	.062	.032
			CW-0207	.203	.375	.500	.218	.062	.032
.125	CWV-0305*	.187	CW-0305*	.172	.328	.375	.187	.062	.032
	CWV-0307		CW-0307	.203	.375	.500	.218	.062	.032
.187	CWV-0405*	.250	CW-0405*	.172	.344	.375	.187	.062	.032
	CWV-0407		CW-0407	.203	.406	.500	.218	.062	.032
.250	CWV-0505*	.312	CW-0505*	.172	.375	.375	.187	.062	.032
	CWV-0507		CW-0507	.203	.437	.500	.218	.062	.032
.312	CWV-0605*	.375	CW-0605*	.172	.406	.375	.187	.062	.032
	CWV-0607		CW-0607	.203	.468	.500	.218	.062	.032
.375	CWV-0705*	.437	CW-0705*	.172	.437	.375	.187	.062	.032
	CWV-0707		CW-0707	.203	.500	.500	.218	.062	.032
.437	CWV-0805*	.500	CW-0805*	.172	.468	.375	.187	.062	.032
	CWV-0807		CW-0807	.203	.531	.500	.218	.062	.032
.500	CWV-0905*	.562	CW-0905*	.172	.500	.375	.187	.062	.032
	CWV-0907		CW-0907	.203	.562	.500	.218	.062	.032
.562	CWV-1005*	.625	CW-1005*	.172	.531	.375	.187	.062	.032
	CWV-1007		CW-1007	.203	.593	.500	.218	.062	.032
.625	CWV-1105*	.687	CW-1105*	.172	.562	.375	.187	.062	.032
	CWV-1107		CW-1107	.203	.625	.500	.218	.062	.032
.687	CWV-1207	.750	CW-1207	.203	.656	.500	.218	.062	.032
.750	CWV-1307	.812	CW-1307	.203	.687	.500	.218	.062	.032
.812	CWV-1407	.875	CW-1407	.203	.718	.500	.218	.062	.032
.875	CWV-1507	.937	CW-1507	.203	.750	.500	.218	.062	.032
.937	CWV-1607	1.000	CW-1607	.203	.781	.500	.218	.062	.032
1.000	CWV-1707	1.062	CW-1707	.203	.812	.500	.218	.062	.032

Except for clamping diameter, dimensions of cushioned and plain parts are identical.  
 NOTE: Part numbers shown with asterisk (\*) are produced from CRCQ Steel, Zinc Plated.